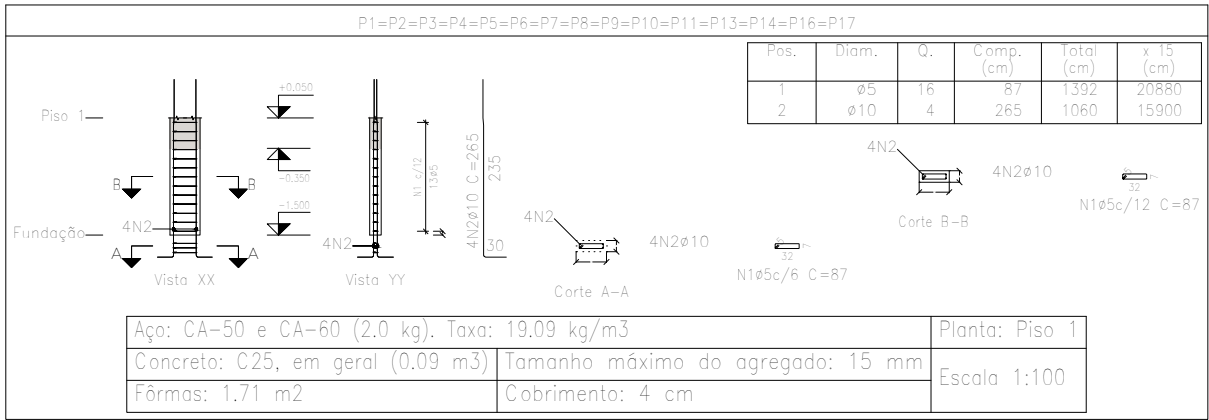
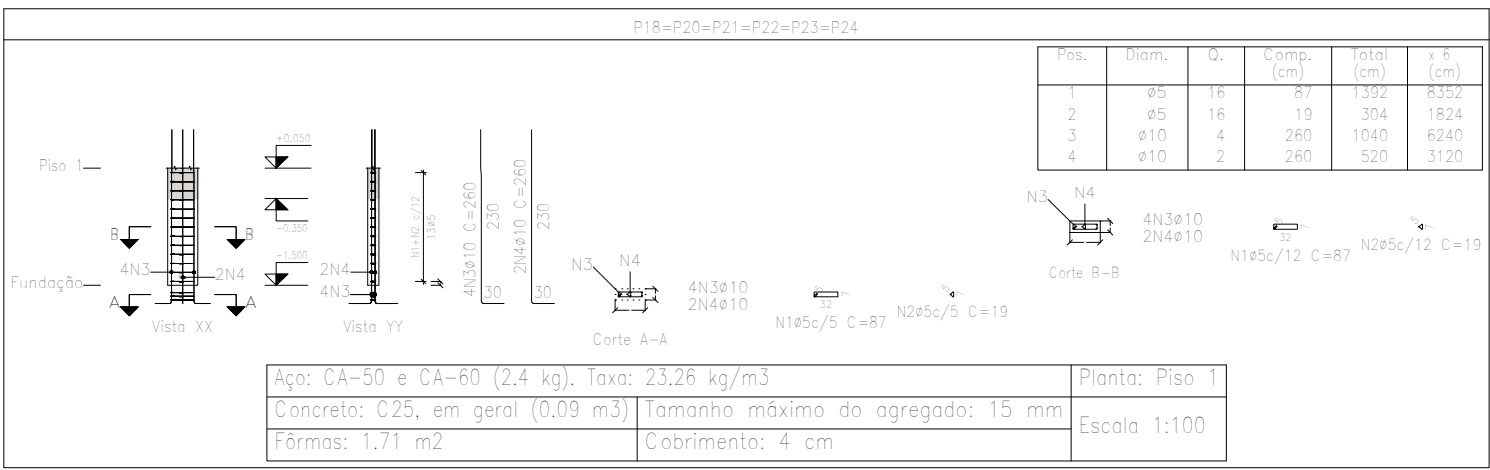
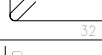


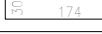
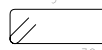


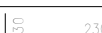

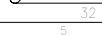




Resumo Aço	Comp. total (m)	Peso+10% (kg)	Total
Pilares			
CA=50 ø10	290,2	197	197
CA=60 ø5	355,4	61	61
Total			258



Planta: Piso 1  
Concreto: C25, em geral  
Aço dos estribos: CA=50 e CA=60



Elemento	Pos.	Diam.	Q.	Esquema (cm)	Comp. (cm)	Total (cm)	CA=50 (kg)	CA=60 (kg)
P1=P2=P3=P4=P5 P6=P7=P8=P9=P10 P11=P13=P14=P16 P17	1	ø5	16		87	1392		2.2
	2	ø10	4		265	1060	6.5	
	Total+10% (x15):						7.2	2.4
							108.0	36.0
P12=P15	1	ø5	16		87	1392		2.2
	2	ø10	4		275	1100	6.8	
	Total+10% (x2):						7.5	2.4
							15.0	4.8
P18=P20=P21=P22 P23=P24	1	ø5	16		87	1392		2.2
	2	ø5	16		19	304		0.5
	3	ø10	4		260	1040	6.4	
	4	ø10	2		260	520	3.2	
	Total+10% (x6):						10.6	3.0
P19	1	ø5	16		87	1392		2.2
	2	ø5	16		19	304		0.5
	3	ø10	4		260	1040	6.4	
	4	ø10	2		260	520	3.2	
	Total+10% (x6):						10.6	3.0
							ø5:	0.0
							ø10:	61.8
							Total:	197.2
								61.8

Unidade de Reabilitação	Data:	10/10/2024
Local:	Número de desenho:	
Unidade de Reabilitação		
Promotor:		
Prefeitura Municipal de Campos de Júlio		
Projeto Estrutural	Escala:	Indicada
Eduardo Rampanelli Tosetto Engenheiro Civil	Data:	10/10/2024
Número do CREA: 1220503037		